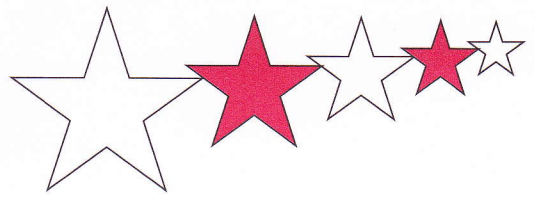


# COSMIK AVIATION



COSMIK AVIATION LTD, BURNSIDE, DEPPERS BRIDGE, SOUTHAM, CV47 2SU

TEL: 01926 614422

FAX: 01926 613781

MOB: 07940 266521

## UK BUILT EV-97 EUROSTAR AIRCRAFT

### SERVICE BULLETIN, SB EV97-UK-02,

Throttle Control Locking Screw. (see fig 1 accompanying these instructions).

#### Background

There has been one reported case of a locking screw coming loose allowing the threaded rod to unscrew and the throttle to suddenly open fully. It is likely that the screw was incorrectly assembled in the first place but this is a potentially serious failure. It is therefore recommended that, unless the builder is certain that the screw was correctly fitted in accordance with the build manual and supplementary notes, the screw should be removed and refitted.

#### Applicability.

All UK Eurostar aircraft.

#### Accomplishment.

Remove top fuselage coaming behind the firewall to provide access.

Check that the throttle control range adjustment is correct.

Note: When the throttle control is pushed fully forward against its stop, the throttle cables should be just slack with the carburettor throttle levers on their full throttle stops.

When the throttle control is pulled fully back against its stop, the carburettor throttle levers should both be just touching their idle screws but without any significant increase in tension in the throttle cables.

If necessary, correct the range adjustment and cable adjustments to meet the above requirements. (Range adjustment is achieved by slackening the locking screw and screwing the threaded rod forwards or backwards within the brass ferrule as required).

Remove throttle control locking screw, (item 1, fig. 1).

Apply 1 drop of Loctite 290, (item 5, fig. 1) to the screw threads and the end of the screw.

Replace the screw with sufficient torque to lock the brass ferrule to the threaded rod.

Recheck the throttle control for correct operation.

Replace the top coaming.

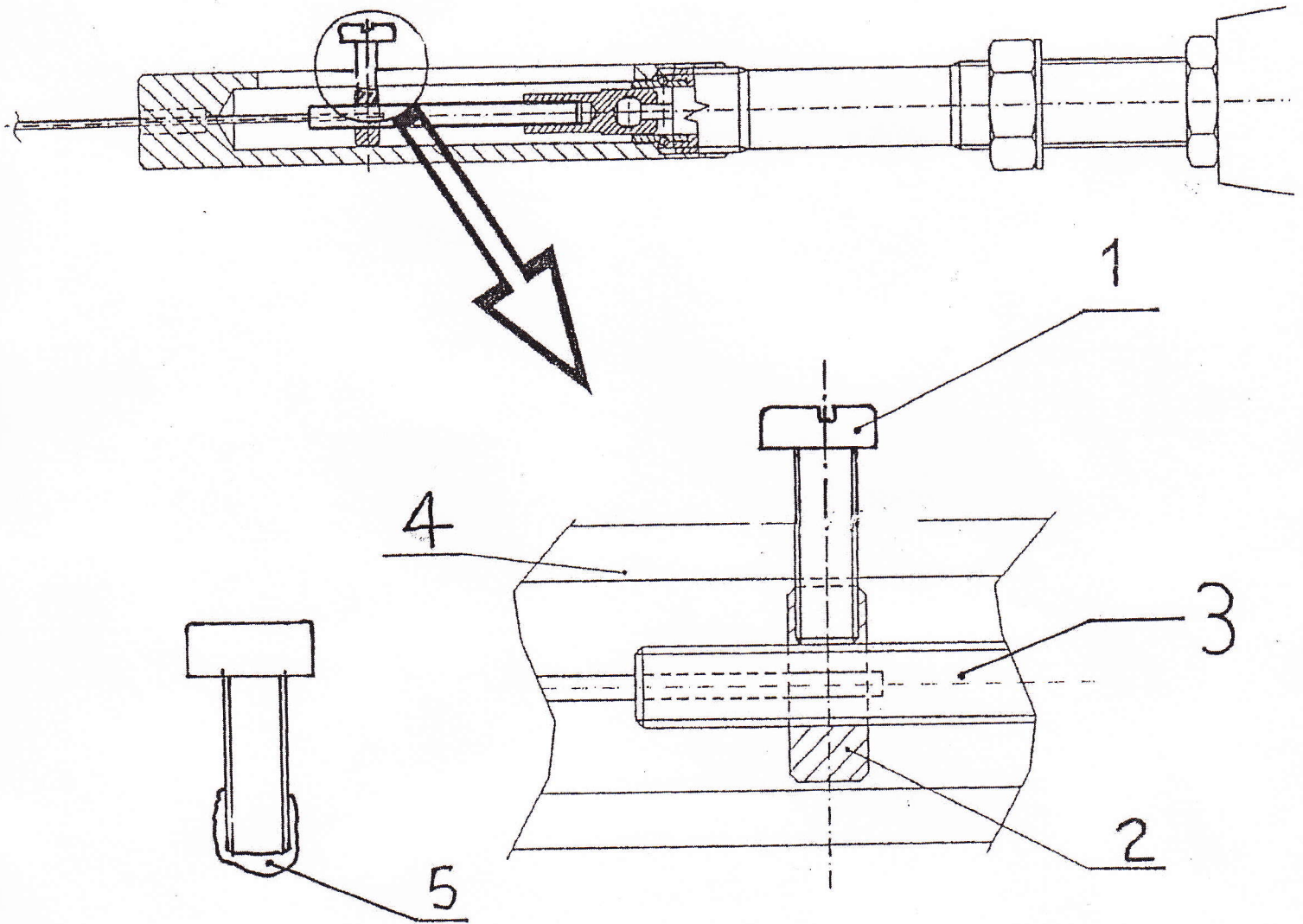
Record compliance with SB EV-97-UK-02 in the Airframe Logbook

Have the entry signed of by your inspector.

23 Sept. 2002

SB-EV97-UK-02

Figure 1 - Scheme of the Throttle Controller



1. Securing screw of the throttle control cable
2. Brass ferrule
3. Threaded rod
4. Controller body
5. Loctite 290 applied to screw before fitting